



[AB+PARTNERS]
Architecture and Interior Design

DESIGN | BUILD | FURNISH

**BUILDING
BUSINESS
STORIES**

SUMMARY

Interior Design
Landscape
Architecture



DESIGN

Turnkey business



BUILD

Decoration
Furniture manufacture



FURNISH

PINTEREST APARTMENT

RESIDENTIAL



INTERIOR DESIGN



GAFENCU 49 PENTHOUSE

RESIDENTIAL

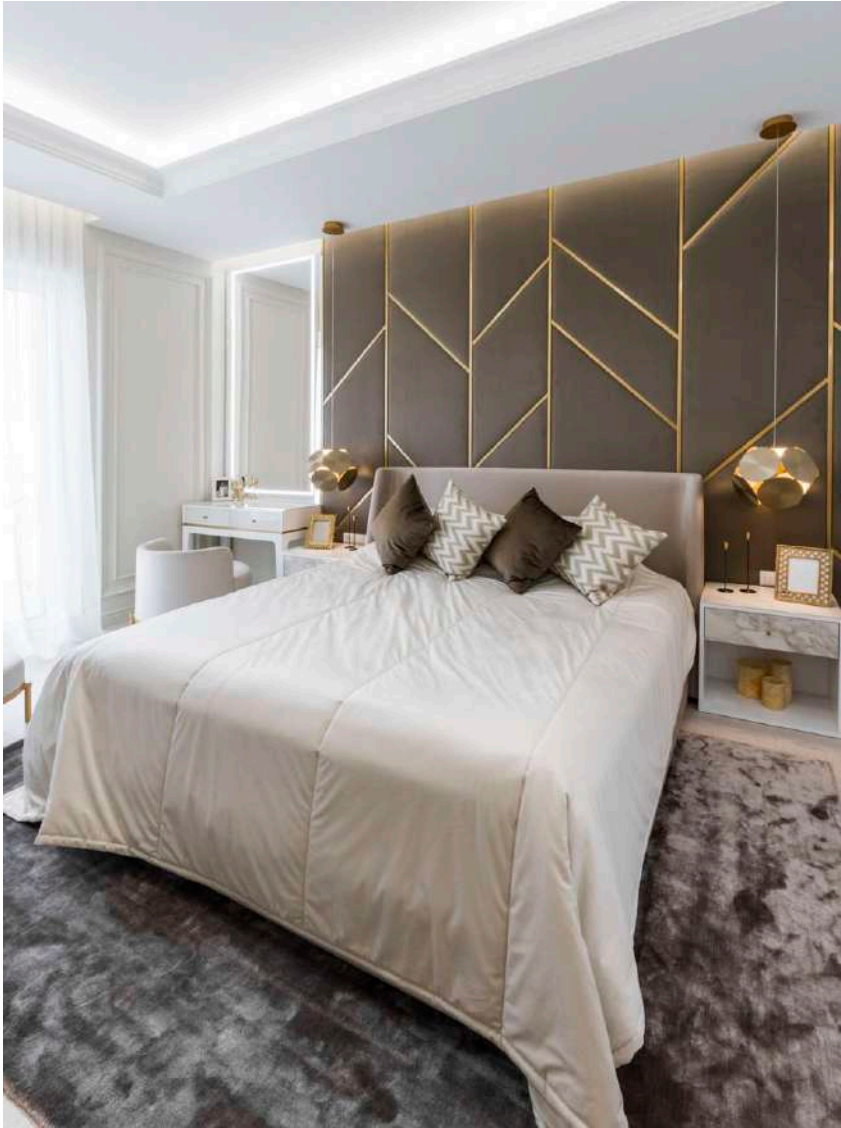


INTERIOR DESIGN



ARMN APARTMENT

RESIDENTIAL

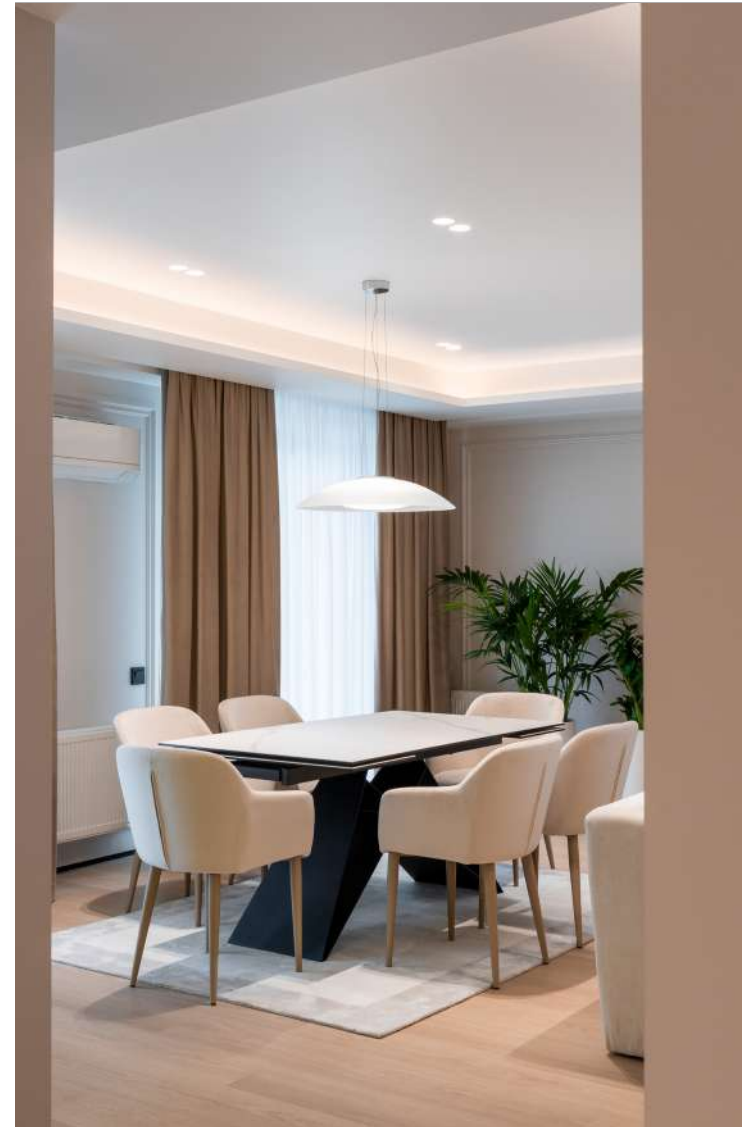


INTERIOR DESIGN



G APARTMENT

RESIDENTIAL



INTERIOR DESIGN



SPLENDID HOUSE

RESIDENTIAL

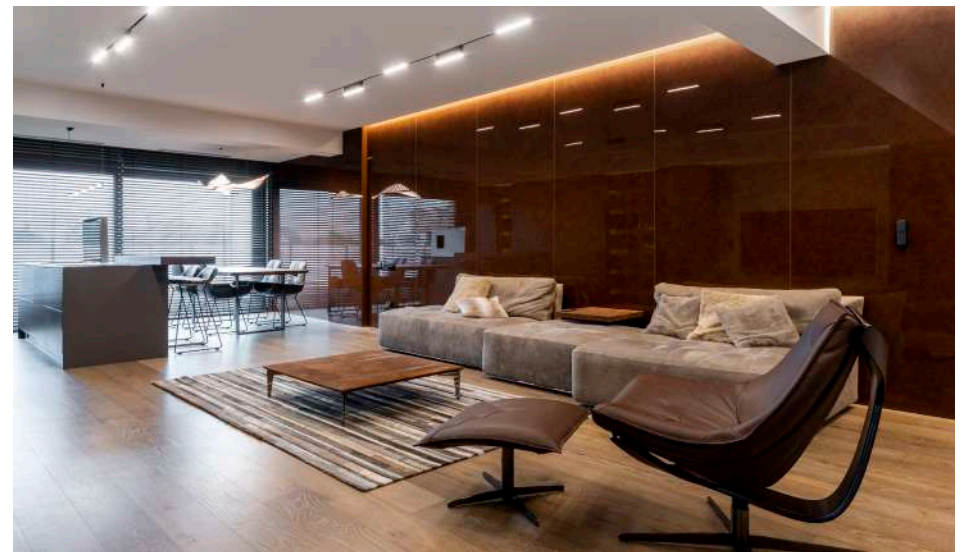


INTERIOR DESIGN



SHADES OF BLACK

RESIDENTIAL



INTERIOR DESIGN



CRISTIS AESTHETIC

BEAUTY CLINIC



INTERIOR DESIGN





For us, the interior is not just a simple arrangement of furniture pieces; it speaks to the guests, communicates, represents us, and has something behind it, a story that we want to convey to our guests. We made an effort to find a company with whom we think in the same harmony, in the same style. It was a pleasure to collaborate with AB+Partners. I believe it is very important for us to maintain the same quality that we had from the beginning, and here we had a complete understanding of what quality means. It was extremely pleasant to be surprised when what you receive exceeds your expectations.

Lucia Berdos,
Founder, CRISTIS AESTHETIC BEAUTY CLINIC

NOTARY

OFFICE



INTERIOR DESIGN



GBG HEADQUARTERS

OFFICE



INTERIOR DESIGN



GBG HEADQUARTERS

OFFICE



INTERIOR DESIGN



GBG HEADQUARTERS

OFFICE



INTERIOR DESIGN



GBG HEADQUARTERS

OFFICE



INTERIOR DESIGN





The presence of AB+Partners on the market brings a fresh and invigorating breeze, significantly contributing to its development. They not only provided us with knowledge and expertise, but also the best solutions for our project. Our experience working with them has been excellent, and the results obtained have far exceeded our expectations. We confidently recommend AB+Partners' services to anyone seeking professional business partners oriented towards success.

Tudor Ceaicovschi,
Founder, GBG

ACE CABLING

OFFICE



INTERIOR DESIGN





From the outset, our synergy with their team was palpable, serving as a conduit between technological advancement and aesthetic appeal. Their innovative concepts and keen eye for style perfectly aligned with our vision, propelling our project forward with clarity and purpose. Through their collaboration, our vision not only took shape but also reached new heights of realization.

Donatella Scarpa,
Co-founder ACE Cabling | ECOLIBRI

ELODY

DRUGSTORE



INTERIOR DESIGN



INVITRO

MEDICAL CLINIC



INTERIOR DESIGN



CORSO PIZZA

RESTAURANT



INTERIOR DESIGN



CORSO PIZZA 2

RESTAURANT



INTERIOR DESIGN



DIVUS

RESTAURANT



INTERIOR DESIGN



DIVUS RESTAURANT

VIP ROOM



INTERIOR DESIGN



FLORENTINO DELURE

COMMERCIAL



INTERIOR DESIGN





We chose AB+Partners for the experience they have demonstrated throughout their activity, but also because I personally know Alexandrin Buraga, resonating with him in visions and values. Throughout our collaboration, I became convinced that we made the right choice, encountering true professionals in the field here, who showed meticulousness and maximum attention to creating our project.

Our collaboration was a success due to the openness with which the team perceived the requests we had, as well as the changes that occurred later. Aesthetically and functionally, the team provided solutions that not only make the interior beautiful and practical but also offer the much-needed comfort.

It was an efficient and fruitful collaboration, the result of which will surely delight us for a long time to come.

Serghei Grigor,
CEO & Founder Florentino Delure

TORO CENTER

RESIDENTIAL

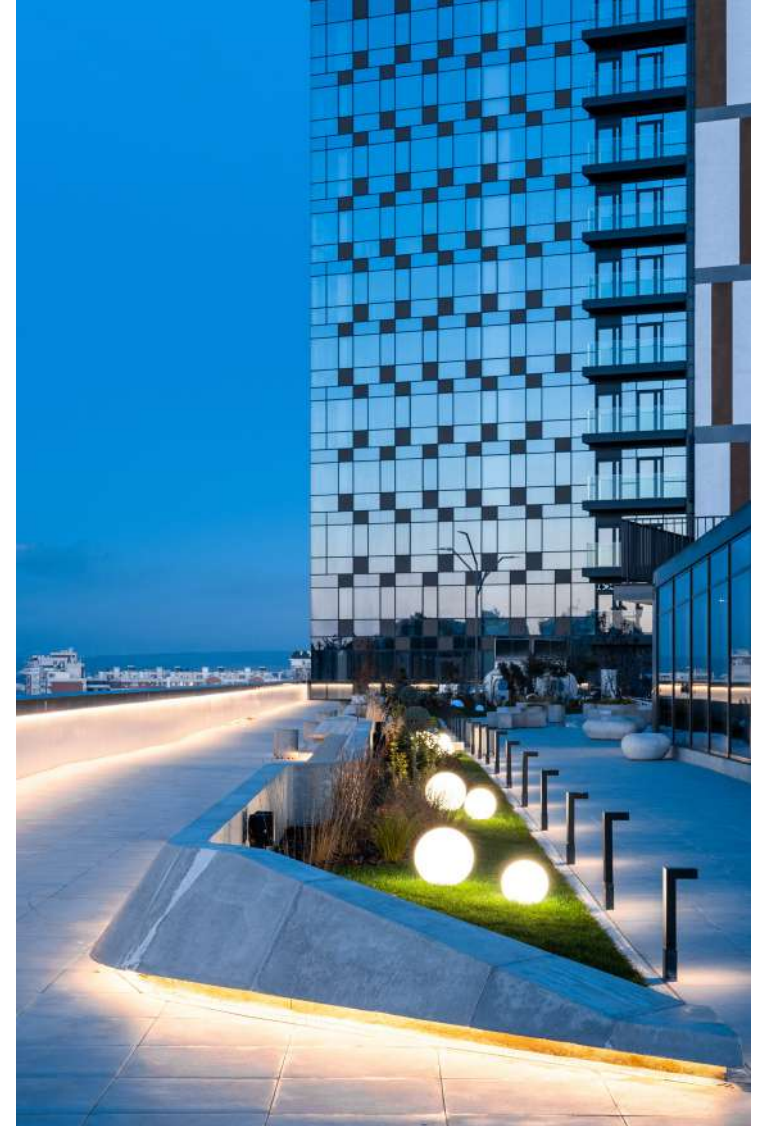


ARCHITECTURE



TORO CENTER

TERRACE



ARCHITECTURE



TORO BUSINESS CENTER

LOBBY



INTERIOR DESIGN



TORO BUSINESS CENTER

CONFERENCE ROOM



ARCHITECTURE



TORO CENTER

COMMERCIAL



INTERIOR DESIGN





We needed a concept that would reflect an innovative vision, one that would ensure user comfort and revitalize the area. For this new approach to space, we decided to work with AB+Partners, an office whose philosophy coincided with ours. We had a complex collaboration, in which we developed Toro Center as a new urban core. This project redefines urban aesthetics through its precise lines and contemporary materials, and its hybrid feature guarantees sustainability and durability over time. It is a partnership in which we shaped relationships, just as we shaped spaces. Each of us brought our own expertise and experience so that, in the end, we had a result that expresses the essence of modern lifestyle.

Viorel Godea,
CEO & founder Lagmar Impex
Toro Center developer

MIRROR HOUSES

RESIDENTIAL

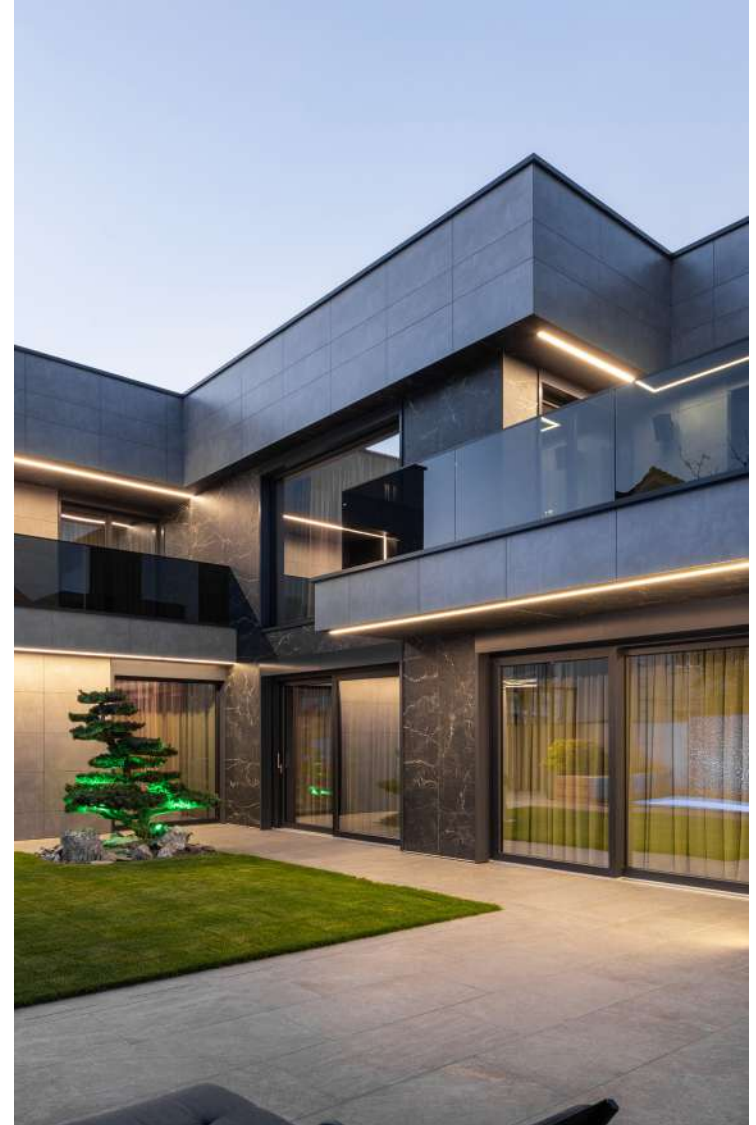


ARCHITECTURE



FRAME HOUSE

RESIDENTIAL



ARCHITECTURE



NARROW HOUSE

RESIDENTIAL

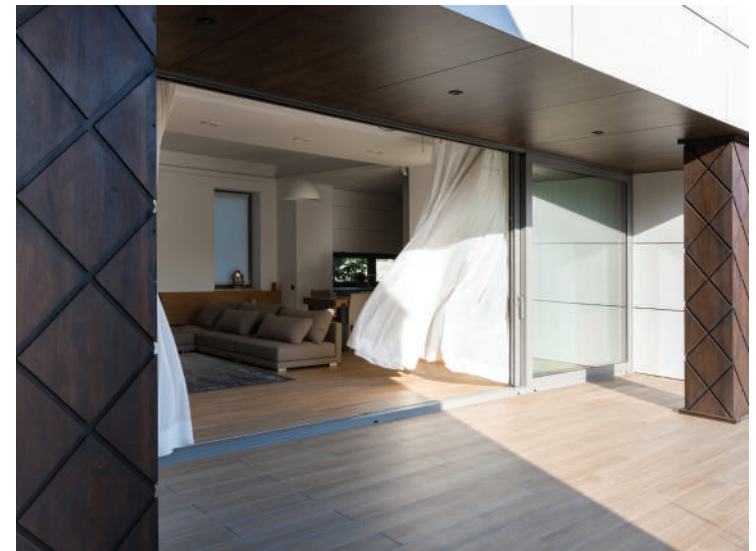


ARCHITECTURE



BOUTIQUE HOUSE

RESIDENTIAL



ARCHITECTURE



URBAN VILLA

RESIDENTIAL



ARCHITECTURE



DENTAL STUDIO

HEALTHCARE

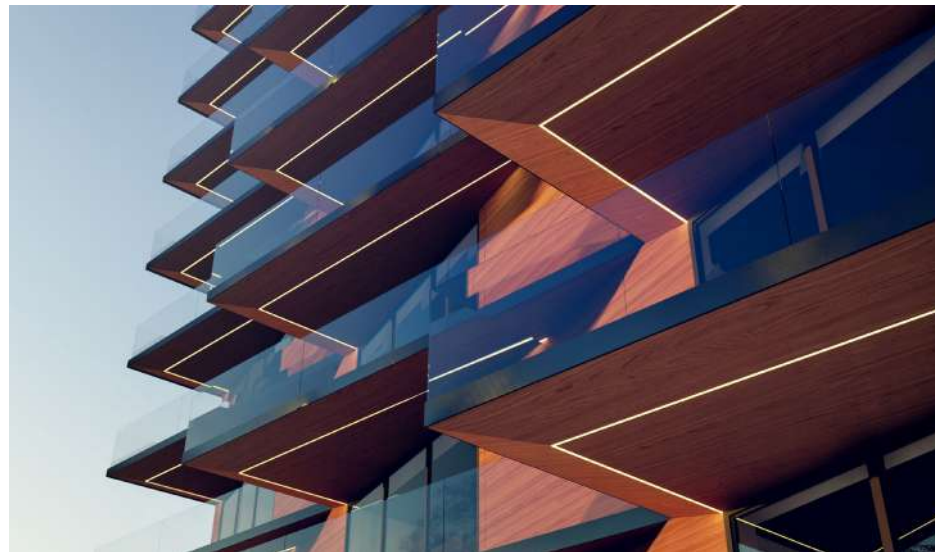


ARCHITECTURE



EDGE RESIDENCE

RESIDENTIAL



ARCHITECTURE



LANDSCAPE FOREST HOUSE

OUTDOOR SPACE



LANDSCAPE



BLUE RIVER

RESTAURANT



TURNKEY BUSINESS



BLUE RIVER

IDENTITY DESIGN



TURNKEY BUSINESS



VIVI SPA

SPA SALON

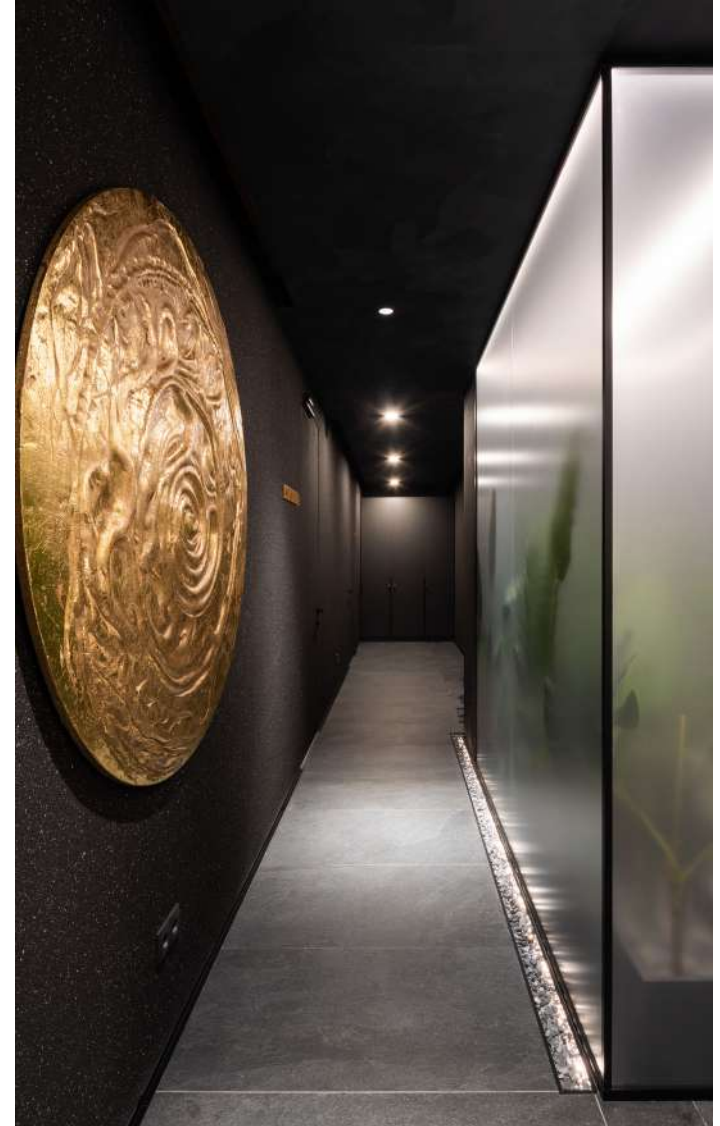


TURNKEY BUSINESS



VIVI SPA

SPA SALON



TURNKEY BUSINESS



VIVI SPA

IDENTITY DESIGN



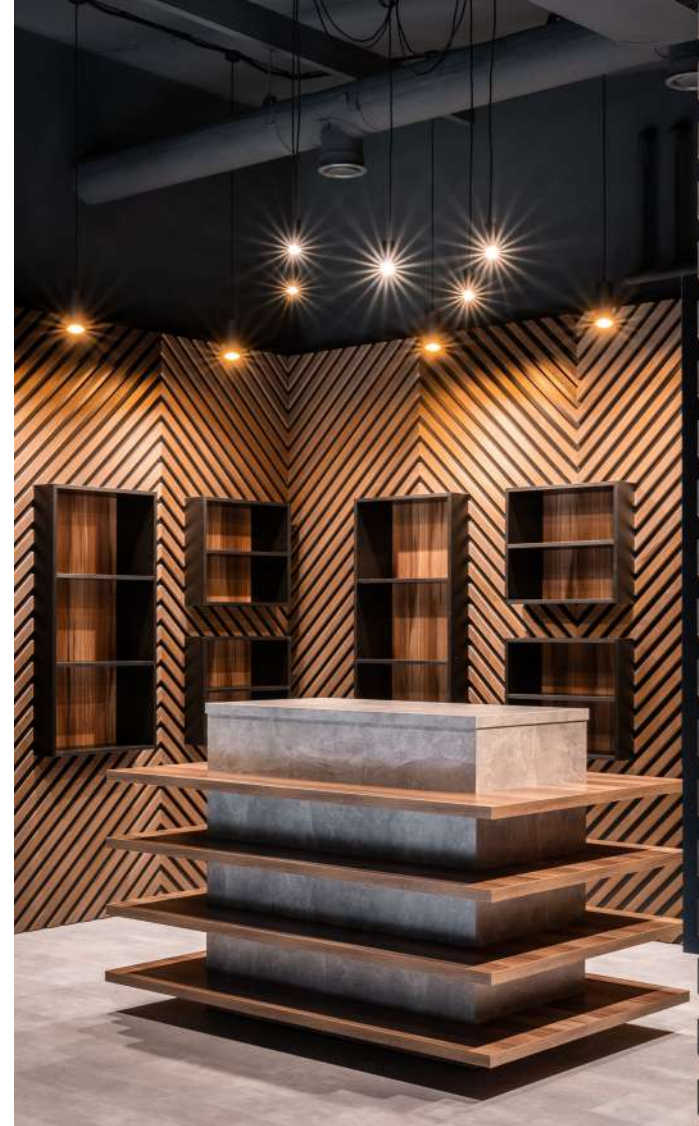


I chose the AB+Partners team because they are young professionals, individuals with innovative ideas, beautiful concepts, and the knowledge of how to bring them to life. When we set the technical task, I said I wanted something exceptional, something WOW. Beyond that, I didn't need to comment further because the team delivered everything superbly. They read my mind and delivered even more than I expected. My greatest satisfaction is that we completed the project exactly as it was presented from the very beginning.

**Natalia Godea,
Founder, VIVI SPA**

SAPICO

OFFICE



TURNKEY BUSINESS



SAPICO

IDENTITY DESIGN



TURNKEY BUSINESS



HONEY FACTORY

COMMERCIAL



TURNKEY BUSINESS



HONEY FACTORY

IDENTITY DESIGN



TURNKEY BUSINESS



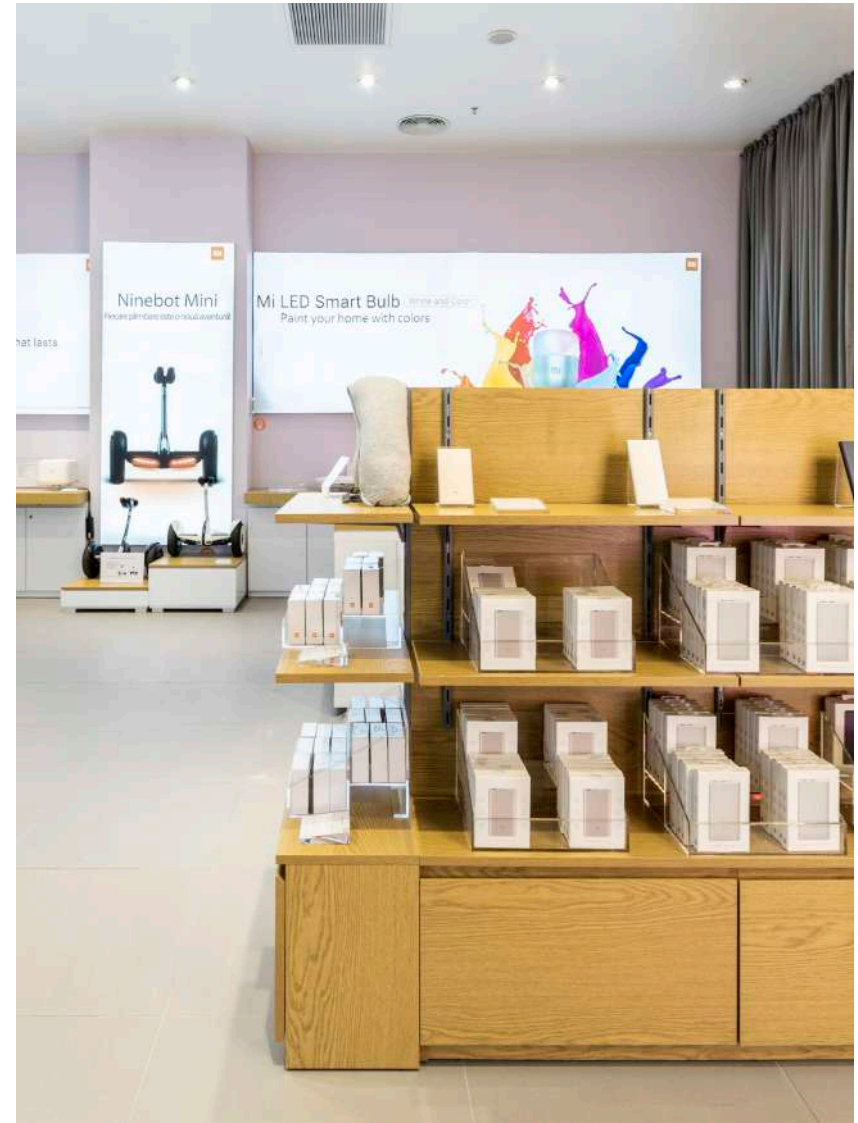
K ROOM



DECORATION

XIAOMI, MI SHOP

FURNITURE



FURNISH MANUFACTURE



CLIENTS

300+

PROJECTS

700+

SQM DESIGNED

330K+

ABOUT US

The Architecture and Design Office AB + Partners, was founded by the architect Alexandrin Buraga in 2015, and currently its identity is also well known worldwide. Our services come to meet customer demands at the highest level and the quality of our works is assured by a big team of professionals.

AB+Partners stands for a community united by common goals, values, and principles. Discipline, innovation, and sustainability are the foundation of developing concepts under which we put our signature. Each project is a challenge, a continuous search for intelligent solutions that meet the demands of our clients.

Among the works signed by AB + Partners are not only residential projects, but also the design of spaces such as offices, commercial, showrooms, and medical clinics. The results generated by the team are based on an efficient collaboration with the clients and the achievement of all the objectives that they set. The stylistic spectrum that the office approaches is wide, each project being approached individually, according to the specifics of the space and the activity for which it is intended.